

# \$515,000 - 105 S 716 Pr Se, Kennewick

MLS® #250251

## \$515,000

0 Bedroom, 0 Bathroom, 2,566 sqft  
Residential

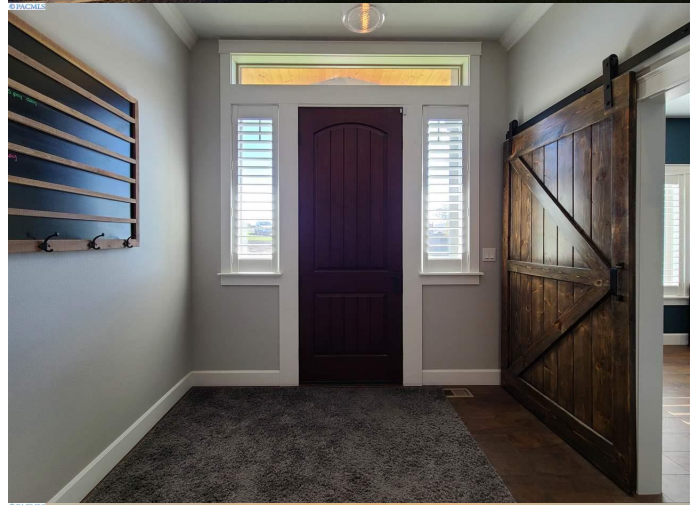
THE RIDGE AT REATA WEST, Kennewick, Washington

Situated on over a half-acre of fully-landscaped, vineyard-view property, you'll enjoy waking every day to breathtaking, panoramic views from every direction. This stunning home offers a beautiful master bedroom with spa-like ensuite and dual walk-in closets, state of the art kitchen, open-concept living/dining with a sleek modern gas fireplace, private office, bonus room, and covered deck to enjoy the scenery year-round. The design of this luxury home includes the finest quality finishes, materials, and craftsmanship; including beautiful engineered hardwood floors, quartz countertops, tile flooring/backsplash throughout, custom built-in cabinets, crown molding, wood wrapped windows, and rustic post/beam construction over the entryway and garage. The basement bonus room has it's own exterior entrance and would be perfect for a theater room, wine cellar, man/she cave, or separate in-law quarters. All appliances stay including the fridge, washer, and dryer.

Built in 2016

## Essential Information

MLS® #	250251
Price	\$515,000
Square Footage	2,566
Year Built	2016
Type	Residential



Status Sold

### **Community Information**

Address 105 S 716 Pr Se  
Subdivision THE RIDGE AT REATA WEST  
City Kennewick  
State Washington  
Zip Code 99338

### **Exterior**

Lot Description View, Cul-de-Sac, Residential Acreage

### **School Information**

District KENNEWICK