

# \$899,999 - 5530 Hershey Lane, West Richland

MLS® #254085

## \$899,999

4 Bedroom, 4.00 Bathroom, 3,920 sqft  
Residential on 0.32 Acres

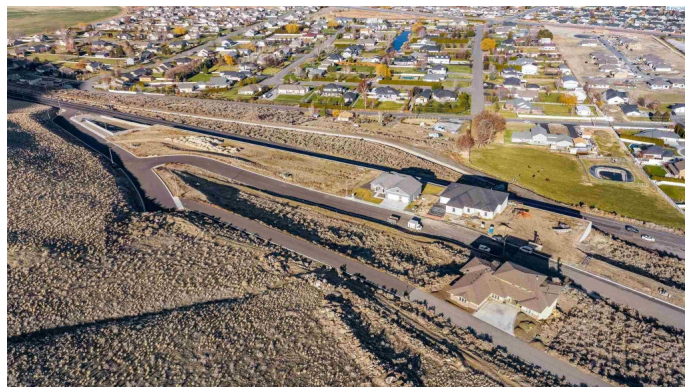
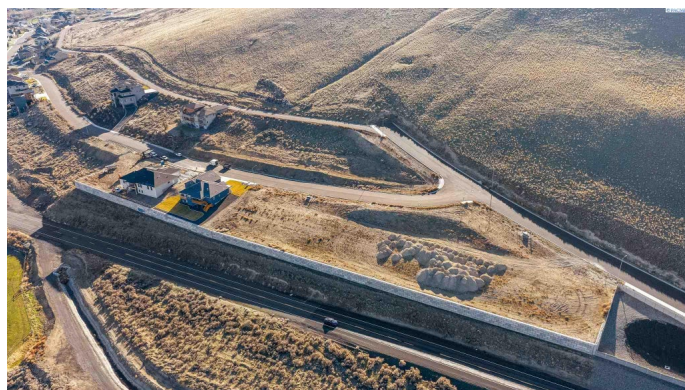
CANDY MTN EST 1, West Richland, WA

MLS# 254085 Welcome to the Rosewood floorplan at The Ridge at Candy Mountain. This home boasts amazing views, 4 generous sized bedrooms with walk in closets in every room, 3 ½ bath, office/flex room, media room, family room and a finished 3 car garage all wrapped up nicely in 3,920 sqft! This gorgeous home will feature a 12'™ ceiling in the entry and living room with 10'™ ceilings throughout the rest of the home, 8'™ interior doors, 5-inch white trim, Engineered Hardwood in living room, hallway, kitchen and dining room (main floor) with Quartz counter tops in the kitchen. The Ridge at Candy Mountain is conveniently located in West Richland offering spacious homesites and incredible views of the Tri-Cities! Your new home will be just minutes away from the Candy Mountain Hiking Trail, Bombing Range Sports Complex, Vintner Shopping Square, Queensgate 12 Cinemas, and easy freeway access. Peake welcomes you to The Ridge at Candy Mountain, a remarkable place to call home. With Peake Homes at The Ridge at Candy Mountain, you can customize one of our spacious floorplans.

Built in 2021

## Essential Information

MLS® #	254085
Price	\$899,999



Bedrooms	4
Bathrooms	4.00
Full Baths	3
Half Baths	1
Square Footage	3,920
Acres	0.32
Year Built	2021
Type	Residential
Sub-Type	Single Family
Style	Other
Status	Active

### **Community Information**

Address	5530 Hershey Lane
Area	Benton
Subdivision	CANDY MTN EST 1
City	West Richland
State	WA
Zip Code	99352

### **Amenities**

Utilities	Appliances-Electric, Gas
Parking	Attached, 3 car, Door Opener, Finished, Garage-3 Car
# of Garages	3
Garages	Attached, 3 car, Door Opener, Finished

### **Interior**

Interior Features	Ceiling - Raised
Appliances	Cook Top, Dishwasher, Garbage Disposal, Microwave Oven, Oven/Built In
Heating	Forced Air, Central Air, Furnace
Fireplace	Yes
Fireplaces	FP - Gas, 1

### **Exterior**

Exterior	Stucco
Exterior Features	Patio/Covered
Lot Description	View
Windows	Windows - Double

Roof	Comp Shingle
Foundation	Concrete

### **Additional Information**

Days on Market	55
Zoning	Residential

### **Listing Details**

Listing Office	Retter & Company Sotheby's International Realty
----------------	---

The data relating to real estate for sale on this website comes in part from the Tri Cities Association of REALTORS®. The information being provided is for consumers' personal, non-commercial use and may not be used for any purpose other than to identify prospective properties consumers may be interested in purchasing.

Listing information last updated on July 28th, 2021 at 1:47pm PDT