

\$785,000 - 194002 E 27th Ave, Kennewick

MLS® #253606

\$785,000

4 Bedroom, 4.00 Bathroom, 2,723 sqft
Residential on 4.61 Acres

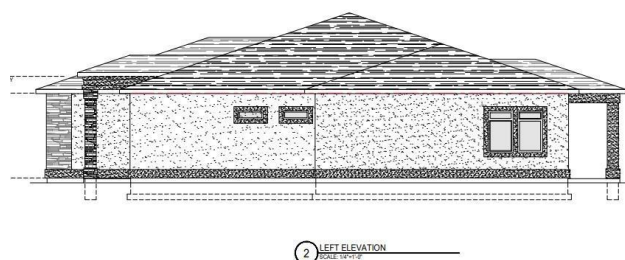
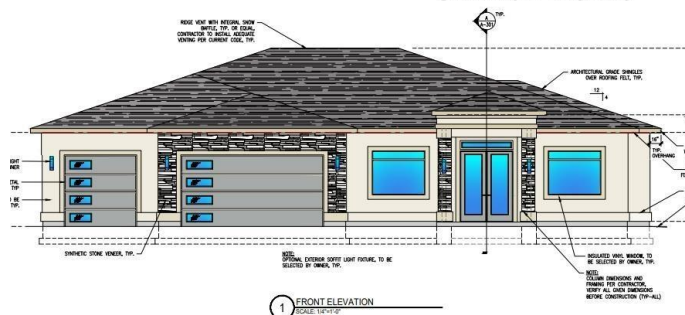
WILLAMETTE HEIG, Kennewick, WA

MLS# 253606 Brand new modern "Multi-Generational" 4-bedroom 4 bath with den, stucco rambler with modern finishes and amenities. The ceilings in the foyer, great-room, dining room, and master bedroom will be coffered. Other attractive features include an electric fireplace on the Great room (acts as a great focal point and prewiring for surround sound). The spacious kitchen, will be open to the great room and will be completed with quartz counters, 2 pantries and an island with eating space, formal dining room with view of the back yard. All of the bedrooms are on one single floor with a the master suite separate from the other rooms. The master will include a master bath with beautiful free-standing tub, tiled walk-in shower, linen storage closet, dressing table, and a large walk-in closet. The home will also feature a den that can be used as a kids play-room, a family room, a craft room, or guest room. You will enjoy the large covered back patio with fan (prewired for an outdoor TV, gas stub for a grill). Entertaining in the privacy of these 5 acres will be easy. Here you will have plenty of space to be creative and design your perfect back yard retreat, or build that shop to store your toys. The 3-car garage have a work bench as a bonus feature and will fit a large truck nicely and will be completed with front yard UGS and landscaping. You would love to call this place HOME.

Built in 2021



Similar Home



Essential Information

| | |
|----------------|---------------|
| MLS® # | 253606 |
| Price | \$785,000 |
| Bedrooms | 4 |
| Bathrooms | 4.00 |
| Full Baths | 3 |
| Half Baths | 1 |
| Square Footage | 2,723 |
| Acres | 4.61 |
| Year Built | 2021 |
| Type | Residential |
| Sub-Type | Single Family |
| Style | Other |
| Status | Active |

Community Information

| | |
|-------------|-------------------|
| Address | 194002 E 27th Ave |
| Area | Benton |
| Subdivision | WILLAMETTE HEIG |
| City | Kennewick |
| State | WA |
| Zip Code | 99337 |

Amenities

| | |
|--------------|-------------------------------|
| Utilities | Appliances-Electric, Electric |
| Parking | 3 car, Garage-3 Car |
| # of Garages | 3 |
| Garages | 3 car |

Interior

| | |
|-------------------|--|
| Interior Features | Ceiling - Coffered, Ceiling Fan(s) |
| Appliances | Dishwasher, Garbage Disposal, Microwave Oven, Range/Oven |
| Heating | Multi-Zone - Heating, Multi-Zone - Cooling, Heat Pump - Heating, Heat Pump - Cooling |
| Fireplace | Yes |
| Fireplaces | In Family Room, FP - Electric, Propane Tank Leased |

Exterior

| | |
|----------|-----|
| Exterior | Lap |
|----------|-----|

| | |
|-------------------|--|
| Exterior Features | Patio/Covered |
| Lot Description | Corner Lot, Garden Area, Animals Allowed, Open Space (ag), Residential Acreage, View |
| Windows | Windows - Double, Windows - Vinyl |
| Roof | Comp Shingle |
| Foundation | Concrete |

Additional Information

| | |
|----------------|-------------|
| Days on Market | 160 |
| Zoning | Residential |

Listing Details

| | |
|----------------|-----------------|
| Listing Office | eXp Realty, LLC |
|----------------|-----------------|

The data relating to real estate for sale on this website comes in part from the Tri Cities Association of REALTORS®. The information being provided is for consumers' personal, non-commercial use and may not be used for any purpose other than to identify prospective properties consumers may be interested in purchasing.
Listing information last updated on October 20th, 2021 at 9:17am PDT