

\$300,000 - 4070 Keene Road, Richland

MLS® #251794

\$300,000

Bedroom, Bathroom,
Land on 0.55 Acres

OTHER, Richland, WA

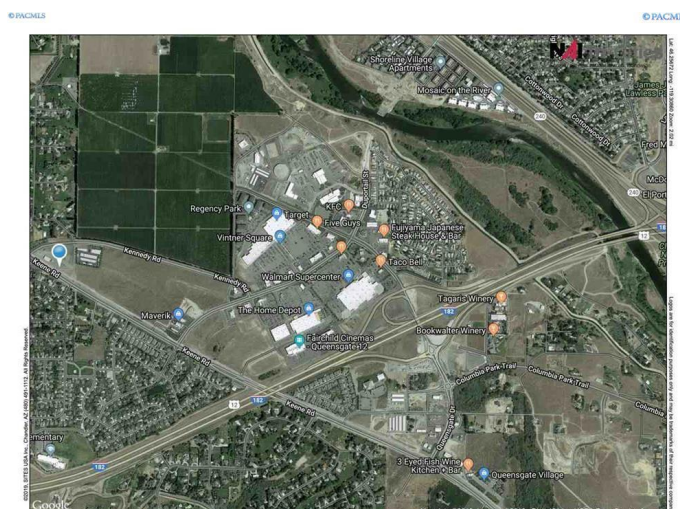
MLS# 251794 Over a half acre (0.553) commercial Lot fronting Keene Road just east of the Kennedy intersection & zoned Business Commerce. The 2018 traffic counts were 21,950 daily. This property has a dedicated access easement for ingress egress already paved at it's east end. City water, City Sewer & Natural Gas are there (Sewer is needing connected to the City Main but piping is under the paved driveway ready to go). Not only are the traffic counts fantastic, this property fronts the walking/bike bath. The significance of this to the commercial investor is the building permit will NOT require construction of a sidewalk/curb/gutter & the foot traffic is established. Roasters Coffee & a Bush Carwash are within 200 yards....You've seen the kind of WONDERFUL business they do?!

Essential Information

MLS® #	251794
Price	\$300,000
Acres	0.55
Type	Land
Sub-Type	Commercial
Status	Active

Community Information

Address	4070 Keene Road
Area	Benton



Subdivision	OTHER
City	Richland
State	WA
Zip Code	99352

Amenities

Utilities	Electric to Property Line, Gas to Property Line
-----------	-------------------------------------------------

Exterior

Lot Description	Located in City Limits, See Remarks
-----------------	-------------------------------------

Additional Information

Days on Market	218
Zoning	Commercial Distric

Listing Details

Listing Office	Markel Properties
----------------	-------------------

The data relating to real estate for sale on this website comes in part from the Tri Cities Association of REALTORS®. The information being provided is for consumers' personal, non-commercial use and may not be used for any purpose other than to identify prospective properties consumers may be interested in purchasing.

Listing information last updated on September 26th, 2021 at 1:02pm PDT