

\$725,000 - 2749 Katie Rd, Kennewick

MLS® #250654

\$725,000

Bedroom, Bathroom,
Land on 14.34 Acres

REATA HEIGHTS, Kennewick, WA

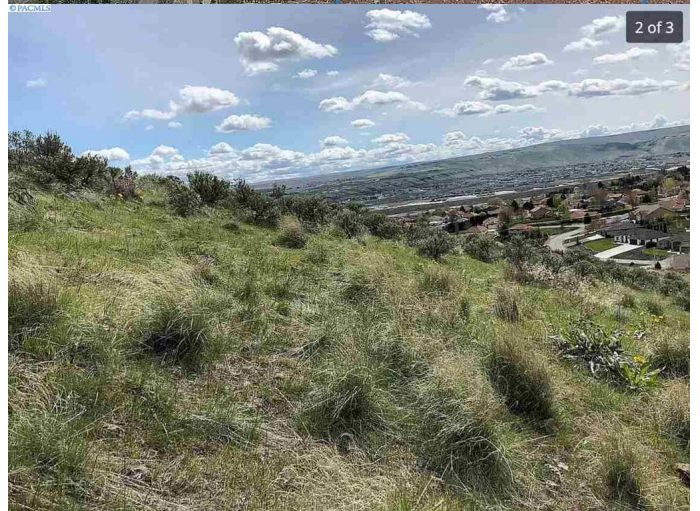
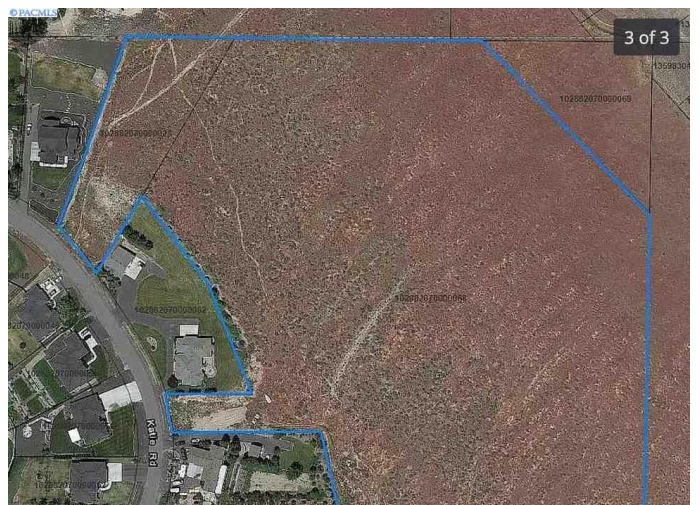
MLS# 250654 One of the few untouched large residential parcels available in the Tri-Cities. These view lots are Benton County yet border Richland on three sides and have easy access to Badger Mountain Irrigation District and Benton PUD. Combined, they provide access to Katie Rd. in two locations and are perfect for a large custom home or multiple custom homes. New elegant homesites surround the acres. Street frontage. Beautiful view of Badger Valley. New roads currently being completed to make easy access to South Richland and highways. Domestic water with Badger Mtn Water, Irrigation and electricity available at street. Geotechnical survey completed November 2017. Two parcels: Reata Heights lots 23 & 65. total 14.34 acres. Addresses - 2739 & 2749 Katie Rd Kennewick. Adjacent to New West Cliff heights development.

Essential Information

MLS® #	250654
Price	\$725,000
Acres	14.34
Type	Land
Sub-Type	Residential
Status	Active

Community Information

Address 2749 Katie Rd



Area	Benton
Subdivision	REATA HEIGHTS
City	Kennewick
State	WA
Zip Code	99338

Amenities

Utilities	Electric in Street
-----------	--------------------

Exterior

Lot Description	Approved Plat Map, Located in County, Plat Recorded, Recorded Plat Map, Residential Acreage, Survey, View, View/Panoramic
-----------------	---

Additional Information

Days on Market	271
Zoning	SINGLE FAMILY R

Listing Details

Listing Office	Home Realty of the Tri-Cities
----------------	-------------------------------

The data relating to real estate for sale on this website comes in part from the Tri Cities Association of REALTORS®. The information being provided is for consumers' personal, non-commercial use and may not be used for any purpose other than to identify prospective properties consumers may be interested in purchasing.

Listing information last updated on September 26th, 2021 at 12:32pm PDT