

\$599,900 - 2403 S Quillan Pl., Kennewick

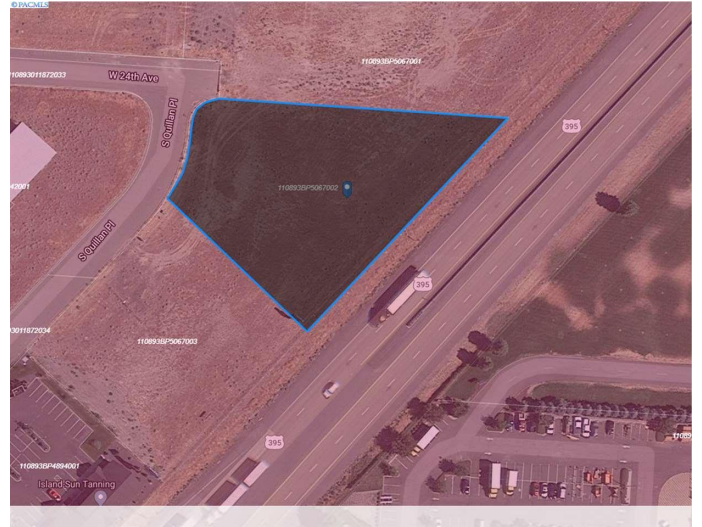
MLS® #247018

\$599,900

Bedroom, Bathroom,
Land on 1.12 Acres

OTHER, Kennewick, WA

Commercial Vacant Lot (1.120 Acres) with 310' of frontage along Hwy 395, offering great visibility with high traffic volumes daily. Just south of 27th & 395 intersection on the west side of 395. Great growth with established businesses near/surrounding the Lot. Zoned CR per City of Kennewick - commercial region district is to provide areas for a wide range of commercial uses to serve the entire region.



Essential Information

MLS® #	247018
Price	\$599,900
Acres	1.12
Type	Land
Sub-Type	Commercial
Status	Active

Community Information

Address	2403 S Quillan Pl.
Area	Benton
Subdivision	OTHER
City	Kennewick
State	WA
Zip Code	99337

Amenities

Utilities	Electric in Street
-----------	--------------------

Exterior

Lot Description Recorded Plat Map, See Remarks

Additional Information

Days on Market 462

Zoning COMMCL GENERAL

Listing Details

Listing Office Markel Properties

The data relating to real estate for sale on this website comes in part from the Tri Cities Association of REALTORS®. The information being provided is for consumers' personal, non-commercial use and may not be used for any purpose other than to identify prospective properties consumers may be interested in purchasing.

Listing information last updated on October 20th, 2021 at 10:32am PDT